

# Enhancement Plan and Activity Overview

## WHO?

All 4 and 5 star child care programs providing care and education for Oklahoma's children in classrooms with children 2 years and older.

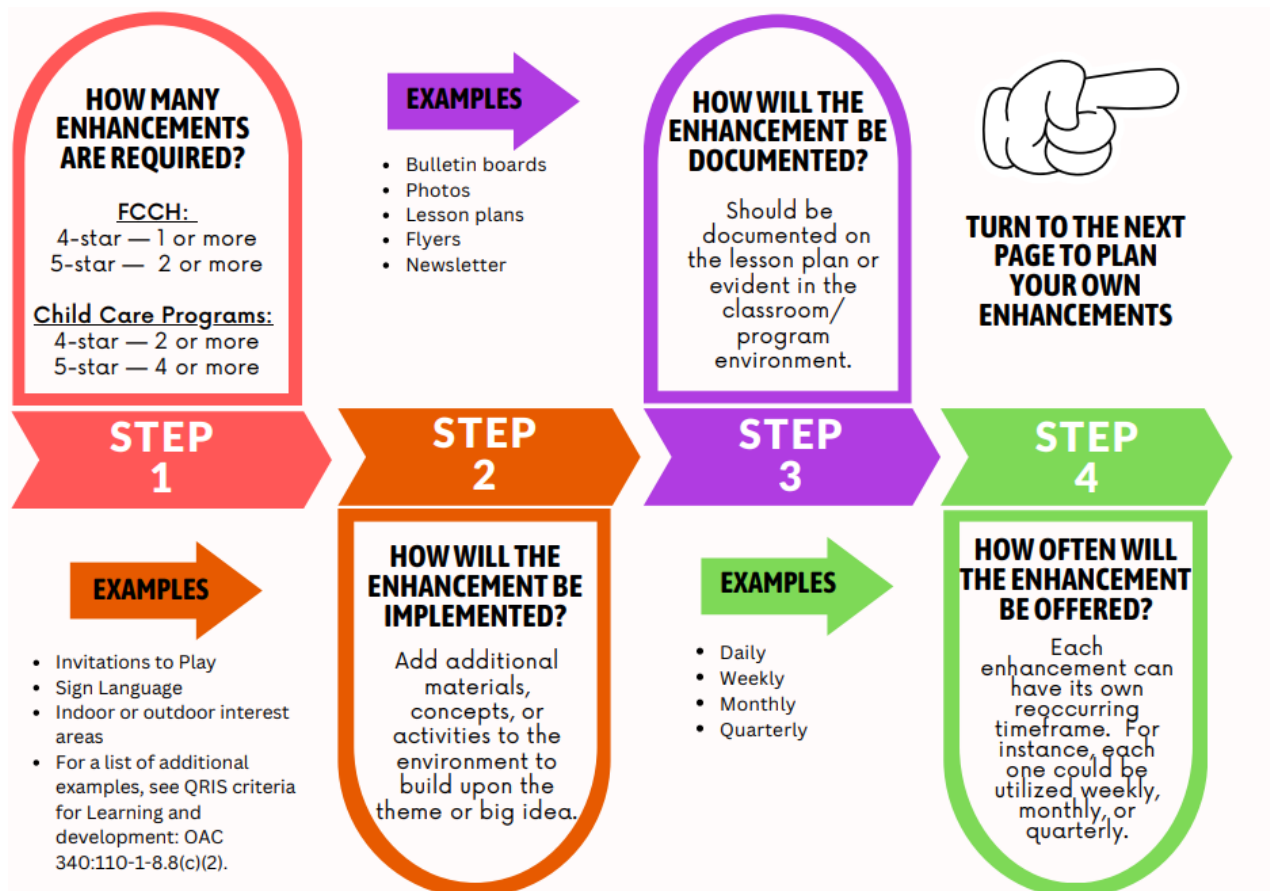
## WHY?

Offering purposeful and planned enhancement activities gives children the opportunity to join in activities that elevates basic skills and increases higher level thinking.

## WHAT?

Enhancement activities are additional materials, concepts, or activities that can be routinely added to the environment to build upon and enrich the children's learning experiences.

## HOW?







## Enhancement Guide

**Family Child Care Homes (FCCH):** Four-star homes implement one or more; Five-star homes implement two or more enhancement activities.

**Child Care Programs (CCP):** Four-star programs implement two or more; Five-star programs implement four or more enhancement activities.

### Examples may include:

Outdoor classroom space	Invitations to play helping children reflect on and extend their learning
Indoor interest areas	Health and physical wellness
Social studies	Science, technology, engineering, art, and math (STEAM)
Life skills	Contracted activities, such as dance lessons, gymnastics lessons, or sports
Nutrition	Activities promoting Native American culture and language
Foreign language	Community involvement
Theater	Sign language
Nature-related activities	Cooking lessons
Other	

	<i>Example:</i>	Enhancement #1	Enhancement #2	Enhancement #3	Enhancement #4
 <b>STEP 1</b> <b>Enhancement Selected</b>	<i>Community Involvement</i>				
 <b>STEP 2</b> <b>How will the enhancement be implemented?</b>	<i>Host a food drive and have a collection competition between classes, have a local food bank guest speaker, and a field trip</i>				
 <b>STEP 3</b> <b>How will the enhancement be documented?</b>	<i>Lesson plans, pictures, and newsletters</i>				
 <b>STEP 4</b> <b>How often will the enhancement be offered?</b>	<i>In the Month of November:                      Week One: Local food bank guest speaker                      Week Two: Host food drive and have a competition between classes                      Week Three: Take a field trip to the local food bank</i>				

\*Above in gray is an example of a planned enhancement. Programs will need to include the correct number of enhancements based on their program type and star level. For 5 or more enhancements, programs may use an additional copy of this document.